

F BLOCK T5 | EVENTS SPACE

# F BLOCK T5

THE  
TRUMAN  
BREWERY

## F BLOCK T5 | EVENTS SPACE



EVENTS



FASHION  
SHOWS



CONFERENCES



EXHIBITIONS



TRADE  
SHOWS



LICENSED

## ABOUT

T5 serves as the final and central space that makes up the first floor of F Block. Insulated and encircled by its sibling spaces, this location is one of the more quiet events spaces available at The Truman Brewery. Like T1, the space is connected to a small outdoor courtyard and is suitable for smaller parties, filming and photoshoots, or can serve as a breakout space when hired with the rest of the first floor. T5 must be hired in conjunction with any neighbouring space with an access point to the street.

## ACCESS

Lift access/Loading Bay Access from Ely's Yard car park (subject to availability).

## ADDRESS

Brick Lane, London, E1 6QL

## CAPACITY

Event specific

## SIZE

6,552 sqft

## LEVEL

First floor

## CEILING HEIGHT

2.7m

F BLOCK T5 | EVENTS SPACE



## LOCATION

T5 is located on the First Floor of F Block. F Block is situated in one of London's most vibrant and energetic areas known throughout London. The iconic Truman chimney and ever-active Estate is frequented by media, creative, fashion and tech industry denizens. The area attracts many thousands of visitors to the bustling work spaces, themed events, weekend markets, eye-popping street art, boutiques, cafes and rich diversity of restaurants.

## SERVICES

4 x male toilets with urinals and 6 x female toilets are accessible from the space.

## COMMS

The Truman Brewery's dedicated on-site service provider, TruTec Services, can easily provide support, networking, telephony and internet connectivity to this location.

## POWER

1 x 63A 3 Phase C Form Socket.  
Twin 13A Sockets throughout.

## LIGHTING

Strip Lights.

## SUPPLIERS

We recommend the use of the following teams:

EVENT PRODUCTION:

**E1 PRODUCTIONS**

INTERNET CONNECTIVITY:

**TRUTEC SERVICES**

SECURITY:

**Trusec Security Ltd.**  
Event Security Services

EVENT CLEANING SERVICES:

**The Truman Brewery**  
Event Cleaning Services





# THE TRUMAN BREWERY

A: 91 Brick Lane, London E1 6QL  
T: 0207 770 6011  
E: monika@trumanbrewery.com

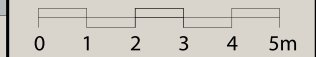
DRAWING NAME  
**F.01.T5**

SPACE DETAILS  
**F BLOCK  
1ST FLOOR - T5  
BASIC PLAN**

VENUE LOCATION  
**F Block  
15 Hanbury Street  
London E1**

LEASE AREA (WITHIN RED BOUNDARY)  
**6552 sqft**

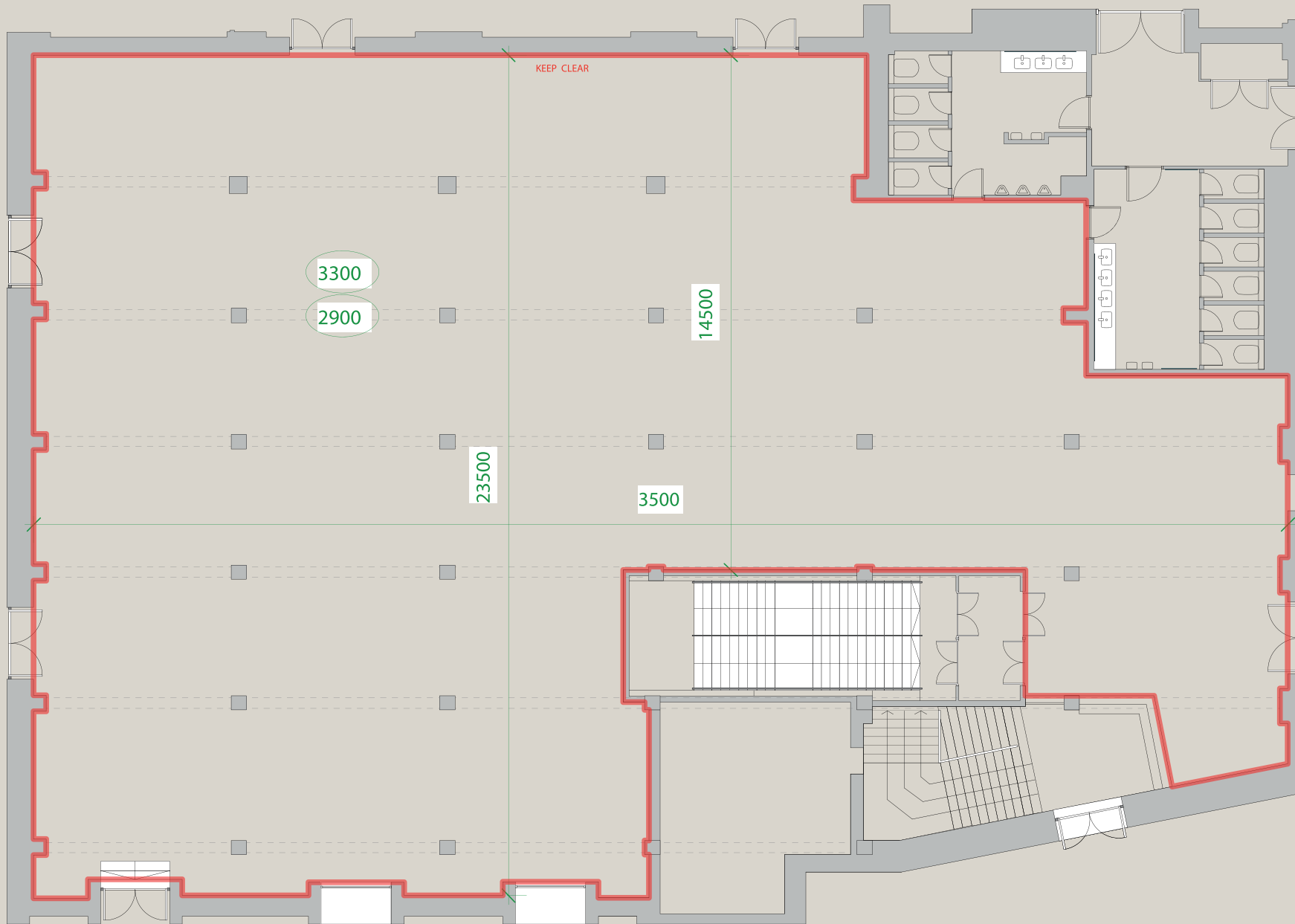
SCALE  
**1:160 @ A4**



- NOTES
- SIGNIFIES CEILING STRUCTURES , MOSTLY BEAMS
  - CEILING HEIGHTS GIVEN IN MILIMETRES ROUNDED DOWN

All measurements are approximate .  
Measurements in milimetres .

DO NOT SCALE .  
IF IN DOUBT ASK .





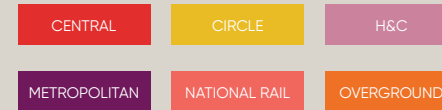


## TRANSPORT

F Block and The Truman Brewery have probably the most central Shoreditch location, and are easily reached by bus, rail, tube or on foot.

The venue benefits from close access to all forms of public transport. Liverpool Street and Shoreditch High Street stations are a short distance away, with Aldgate East within easy reach, offering fast connections across London and beyond.

**Liverpool Street Station**  
Walking distance: 10 min



**Shoreditch High Street Station**  
Walking distance: 5 min



**Aldgate East Station**  
Walking distance: 10 min



**Whitechapel Station**  
Walking distance: 15 min



## Contact us to arrange a viewing:

### Phone

+44(0)20 7770 6001

### Email

events@trumanbrewery.com

### Drop in

The Truman Brewery Events Department,  
E y's Yard,  
15 Hanbury Street,  
London E1 6QR